



Rupture Pin A BRAND of  **Taylor Valve Technology**

GET THE **POWER** OF THE PIN

COLOR CODED PINS

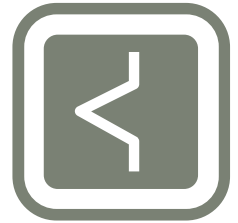
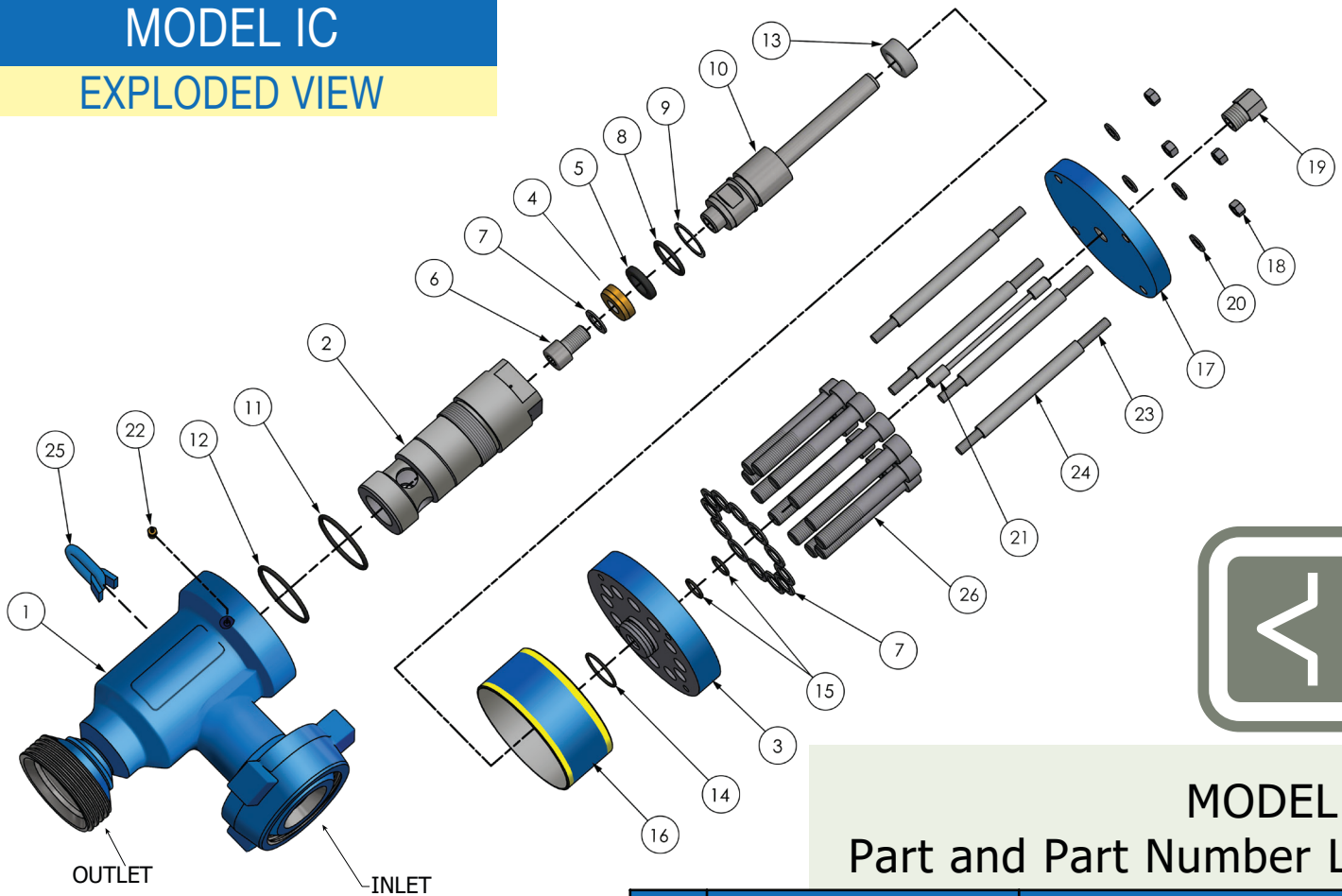
Pins for the Mud Valve are color coded to show each individual set pressure.

MUD RELIEF VALVES - "POCO" PIN CHART*

PIN TYPE	PART NUMBER	SIZE	COLOR
IC - 1,000 PSI	340-604895-24-POCO	3"	BRONZE
IC - 1,500 PSI	340-760756-24-POCO	3"	AQUA
IC - 2,000 PSI	340-393345-24-POCO	3"	LT. GREEN
IC - 2,500 PSI	340-813247-24-POCO	3"	GRAY
IC - 3,000 PSI	340-589412-24-POCO	3"	GOLD
IC - 3,500 PSI	340-635040-24-POCO	3"	BLACK
IC - 3,800 PSI	340-791664-24-POCO	3"	WHITE
IC - 4,000 PSI	340-122301-24-POCO	3"	DK. BLUE
IC - 4,500 PSI	340-272338-24-POCO	3"	ORANGE
IC - 5,000 PSI	340-425354-24-POCO	3"	DK. GREEN
IC - 5,500 PSI	340-523661-24-POCO	3"	YELLOW
IC - 6,000 PSI	340-261998-24-POCO	3"	RED
IC - 6,500 PSI	340-848612-24-POCO	3"	LT. BLUE
IC - 7,000 PSI	340-118400-24-POCO	3"	TAN
IC - 7,500 PSI	340-582953-24-POCO	3"	PINK
IC - 8,000 PSI	340-450182-24-POCO	3"	SILVER
IC - 8,500 PSI	340-111374-24-POCO	3"	FUCHSIA
IC - 9,000 PSI	340-584833-24-POCO	3"	BROWN
IC - 9,500 PSI	340-195800-24-POCO	3"	OLIVE
IC - 10,000 PSI	340-198533-24-POCO	3"	PURPLE

*For other set pressures, contact Taylor Valve.

MODEL IC
EXPLODED VIEW



MODEL IC
Part and Part Number List

Rebuild Kits

340-100809-05 STANDARD REBUILD KIT		
08F-6309N	FLAT SEAL	1
340-100274-05	SEAT CAGE	1
340-100334-98	PISTON ASSY	1
340-100975-98	SEAL RETAINER	1
340-402578-99	BUMPER	1
SK-IC-1	SEAL KIT	1

340-100810-05 ARDT REBUILD KIT		
08F-6309N	FLAT SEAL	3
340-100274-05	SEAT CAGE	1
340-100334-98	PISTON ASSY	1
340-100975-98	SEAL RETAINER	3
340-402578-99	BUMPER	3
SK-IC-1	SEAL KIT	3

ITEM NO.	DESCRIPTION	PART NUMBER	QTY
1	BODY	340-300027-74*	1
2	SEAT CAGE	340-100274-05	1
3	BONNET	340-100364-74	1
4	SEAL RETAINER	340-100975-98	1
5	MAIN SEAL	08F-6309N	1
6	PISTON BOLT	04-0903317012	1
7	WEDGE LOCK WASHER [BONNET]	04-3901410000	12
8	O-RING [PISTON]	00-332832	1
9	BACK-UP RING [PISTON]	00-832803	1
10	PISTON	340-100275-98	1
11	O-RING [UPPER CAGE]	00-334032	1
12	O-RING [LOWER CAGE]	00-333932	1
13	BUMPER	340-402578-99	1
14	O-RING [BONNET]	00-322632	1
15	O-RING [STEM]	00-321432	2
16	SLEEVE	340-100365-03	1
17	TOP PLATE	340-100366-03	1
18	HEX NUT [TOP PLATE]	04-0102711000	4
19	HOLDING NUT	370-100311-98	1
20	WEDGE LOCK WASHER [TOP PLATE]	04-3900801000	4
21	RUPTURE PIN	340-582953-24-POCO**	1
22	GREASE FITTING	340-402523-05	1
23	POST	04-1502711063	4
24	SPACER	340-100368-05	4
25	LIFTING LUG	70-870503	1
26	BONNET BOLT	04-0903317044	12

*Different connections and A-B dimensions are available **Other options available